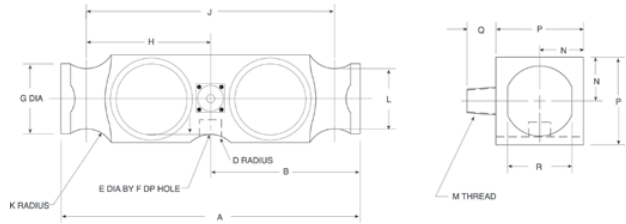





RL75223 Double-Ended Beam, Alloy Steel, Welded-seal, IP67, NTEP 1:10,000 Class IIII Multiple Cell



Picture is a representation of actual product



SPECIFICATIONS

Full Scale Output: 3.0 mV/V	Safe Overload: 150% Full scale	Insulation Resistance: 5000 megohms	Cable Color Code: Red + Excitation Black - Excitation Green + Signal White Signal
Output Resistance: 699-707 ohms	Safe Sideload: 100% Full scale	Deflection at Capacity: 50,000 lb=.018 in/.5 mm, 65,000 lb=.022 in/.6 mm, 100,000 lb=.034 in/.9 mm	Warranty: Two-year limited warranty
Input Resistance: 686-714 ohms	Rated Excitation: 10V DC (15V maximum)	Seal Type: Welded-seal strain gauge*, IP67	Approvals:   
Material/Finish: High-alloy steel	Non-repeatability: 0.01% Full scale	Cable Length: 40 ft/12.2 m	
Temperature: Compensated range 14°F to 104°F/-10°C to 40°C	Combined Error: 0.03% Full scale	Cable Diameter: .305 polyurethane jacket	

DIMENSIONS

RATED CAPACITY	A	B	D	E	F	G	H	J	K	L	M	N	P	Q	R
lb/inches															
50,000-65,000	10.25	5.12	1.00	.75	.78	2.40	4.25	8.50	1.00	2.06	1/2-14 NPT	1.50	3.00	1.03	2.20
100,000	10.25	5.12	1.00	—	—	2.40	4.25	8.50	1.00	2.06	1/2-14 NPT	1.50	3.00	1.03	2.20
kg/mm															
22,679.6-29,483.5	260.4	130.1	25.4	19.1	19.8	61.0	108.0	215.9	25.4	5.2	1/2-14 NPT	38.1	76.2	26.2	55.9
45,359.2	260.4	130.1	25.4	—	—	61.0	108.0	215.9	25.4	5.2	1/2-14 NPT	38.1	76.2	26.2	55.9

ORDER INFORMATION

LOAD RATING	PART #	PRICE
**50,000 lb (22,679.6 kg)	107583	Consult
50,000 lb (22,679.6 kg)	21611	Consult
65,000 lb (29,483.5 kg)	21612	Consult
100,000 lb (45,359.2 kg)	21613	Consult

*Conduit is recommended for maximum protection against the ingress of water and moisture through the cable entry

**60' of cable

INTERCHANGEABLE PRODUCTS

MANUFACTURER	MODEL	PAGE #
VPG Revere Transducers	5223	278
Artech®	80210	—
Thurman®	TSC 800	—
Vishay Sensortronics	65040A-XX-1127W	—
Unibrige	DL90000	—

WEIGH MODULE AVAILABLE

MANUFACTURER	MODEL	PAGE #
Rice Lake Weighing Systems	Translink	94

RICE LAKE WEIGHING SYSTEMS

